



Fire Prevention on Container Ships & Other Major Risks

The Innovative SEC CMS System

*by
G. Karavolos – CEO Seamark*

**Innovation
made in Bremen**

**H.I.M.T
Annual Conference
Dec 2024**

Contents

- ❑ **Fires on Containerships – The Challenge**
 - **The Causes – Acts of God and Misdeclared Cargoes**
 - **Fire-Fighting Rules & Practices**
 - **Fire Prevention vs Fire Fighting**

- ❑ **Other Damage / Loss Risks**
 - **Excessive Container Weights**
 - **Twistlocks Out of Place**

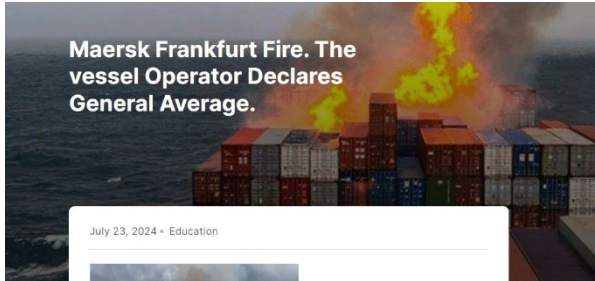
- ❑ **The SEC CMS Solution**
 - **Concept**
 - **How it Works - Components**
 - **Installation & Service**

- ❑ **Application – Timeline**
 - **Newbuildings & Existing Vessels**
 - **Return on Investment**





Fires on Containerships - The Challenge



July 23, 2024 • Education



After the recent incident of fire in the vessel Maersk Frankfurt, the shipping line has declared General Average and have appointed Mr. Richards Hogg Lindley as G.A Adjuster, now what on Earth the general Average means in shipping terms?

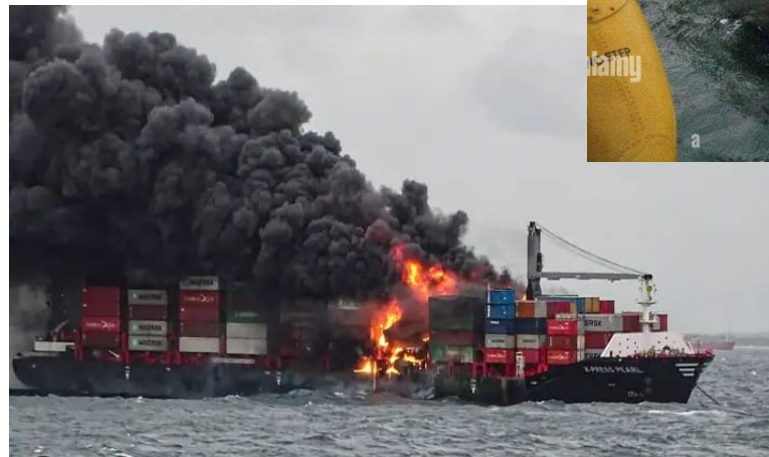
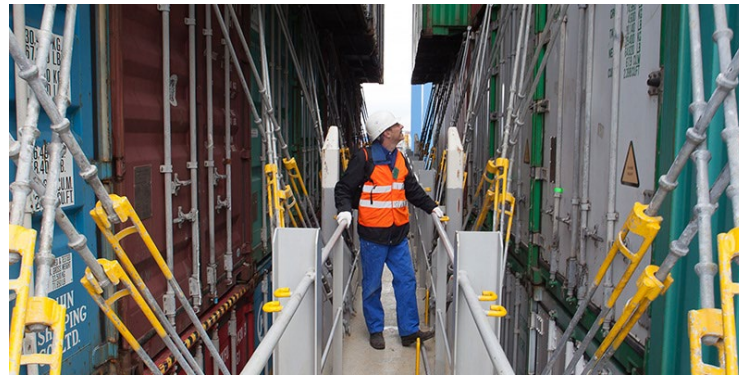


*Maersk Frankfurt
July 19, 2024*





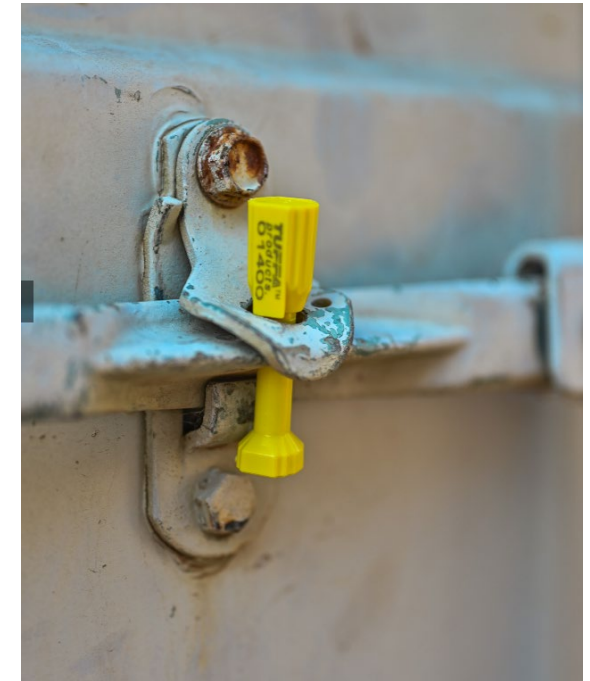
Fires of Containers start from the Contents



Cause: Act of God, or Misdeclared Cargoes?

- 250mil containers in annual traffic
- Containers cannot be opened for inspection (unless...)
- Contents (& Weight) often Misdeclared
- Misdeclared Contents - Serious Cause of Fire Incidents
- Misdeclared Weight – Serious Cause of Stack Collapse
- Crackdown Efforts Unsuccessful

- Typical Reactive Hazardous Commodities:
 - Charcoal / carbon
 - Calcium Hypochlorite
 - Lithium-ion batteries
 - Cotton and wool
 - Fishmeal and krill
 - Seed cake





Fire-Fighting Rules & Practices

- Water Monitor & Water Mist Lance Compulsory on Containerships NB since 2016 (acc SOLAS)
- Fire-Fighting Vessels
- Approach to a Nearby Port



Courtesy of Survitex - XFlow



Conclusion:

Fire Prevention is better than Fire Fighting

Other Major Risks



Courtesy of Container News

Challenges

- Weight of containers not verified at port
- Loading sequence based on declared weight
- Stack overload - stack collapse over voyage
- Containers out-of-shape or light weight can result in twistlocks not-in-place, non-locked.

The SEC Innovative CMS Solution

- **Containers Temperature Monitoring / Fire Prevention, AND :**
- **Containers Weight Measuring**
- **Twistlocks Locking Detection**

SEC Container Monitoring System (CMS) – The Project

The Project

- Funded by the German Federal Government
- Period 1.7.23 – 30.6.26 (3 Years)
- In Operation ~ 1.5 Years

The Functions – In Port & At Sea

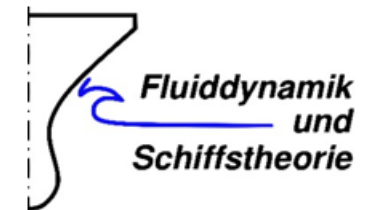
- ❖ **Temperature Monitoring - Fire Prevention**
- ❖ **Containers Weight Verification**
- ❖ **Twistlocks Locking Confirmation**
- Fire Prevention via Real-Time Monitoring
Temperature Change on All Containers Aboard
- Self-learning FEM Model
- No Amendments to Port Operation
- Route Recommendations to avoid excessive loads
to cargo



Gefördert durch:



aufgrund eines Beschlusses
des Deutschen Bundestages



SEC Container Monitoring System (CMS) - The Components

CMS - Bottom Twistlock

Component

- Semi-Automatic Twistlock
- 4 Calibrated Load Cells
- Battery Powered (*)

Function

In Port:

- Measures Weight
- Detects Added Stack Container

At Sea:

- Measures Dynamic Load
- Detects Container Loss

Load Cell



(*) battery replaceable min. every 5 years

SEC Container Monitoring System (CMS) - The Components

CMS - Intermediate Twistlocks

Component

- HD-FAT Twistlock
- Battery Powered (*)

Function

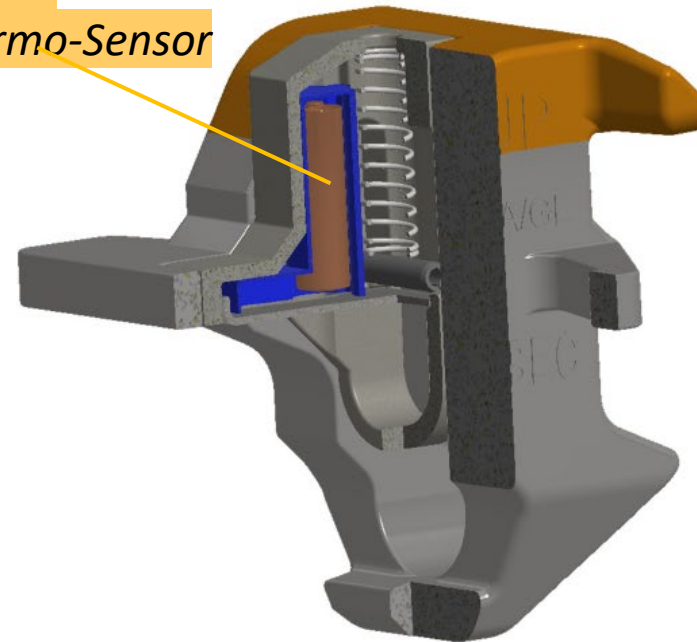
In Port:

- Loading of Container
- Locking Status

At Sea:

- Local Temperature Change

Built-in
Thermo-Sensor

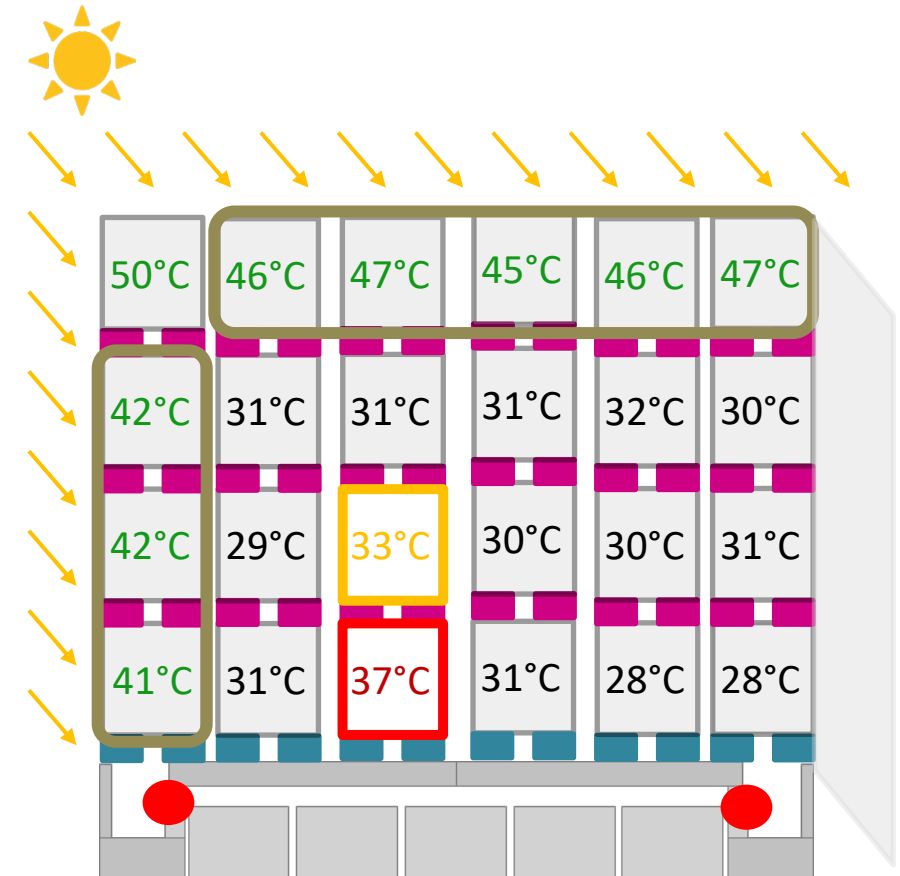


(*) battery replaceable min. every 5 years

SEC Container Monitoring System (CMS) - Temperature Monitoring

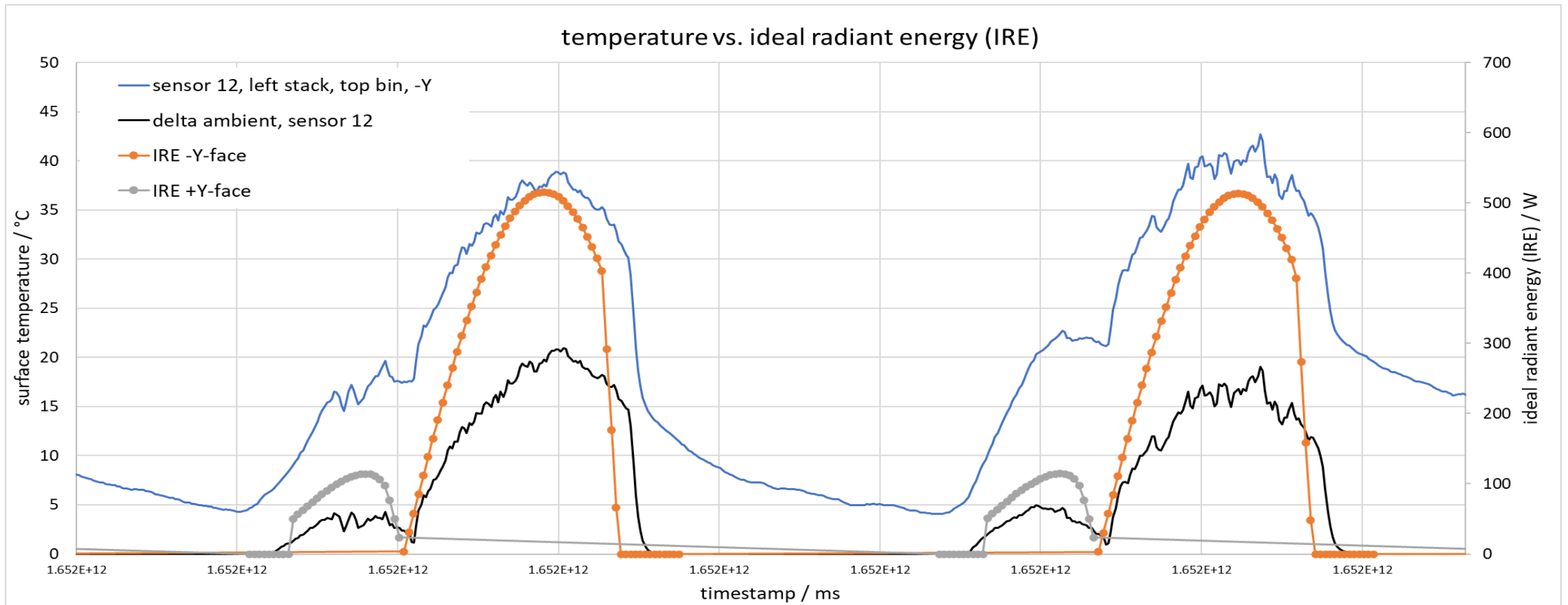
Features

- ❑ Individual Container Temperature Monitoring via Twistlock built-in Thermo-Sensors
- ❑ Evaluates Temperature Changes in relation to:
 - Sun or Shadow,
 - Container Position,
 - Vessel Course &
 - Time, Duration
- ❑ Twistlock Sensors indicate also Locking Status



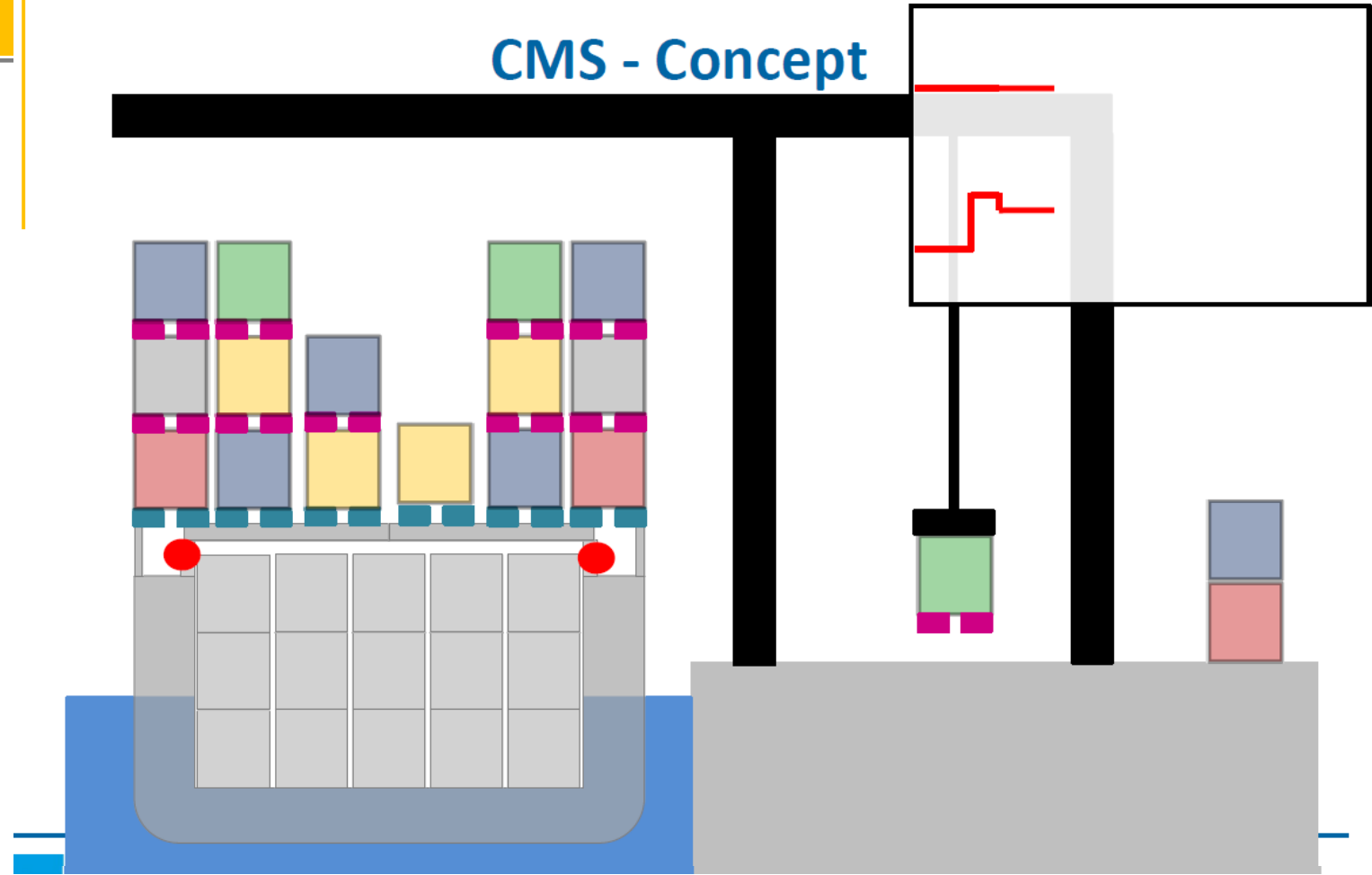
SEC Container Monitoring System (CMS) - Temperature Monitoring

Temperature Relative Change Calculation – *Delta Ambient vs IRE*

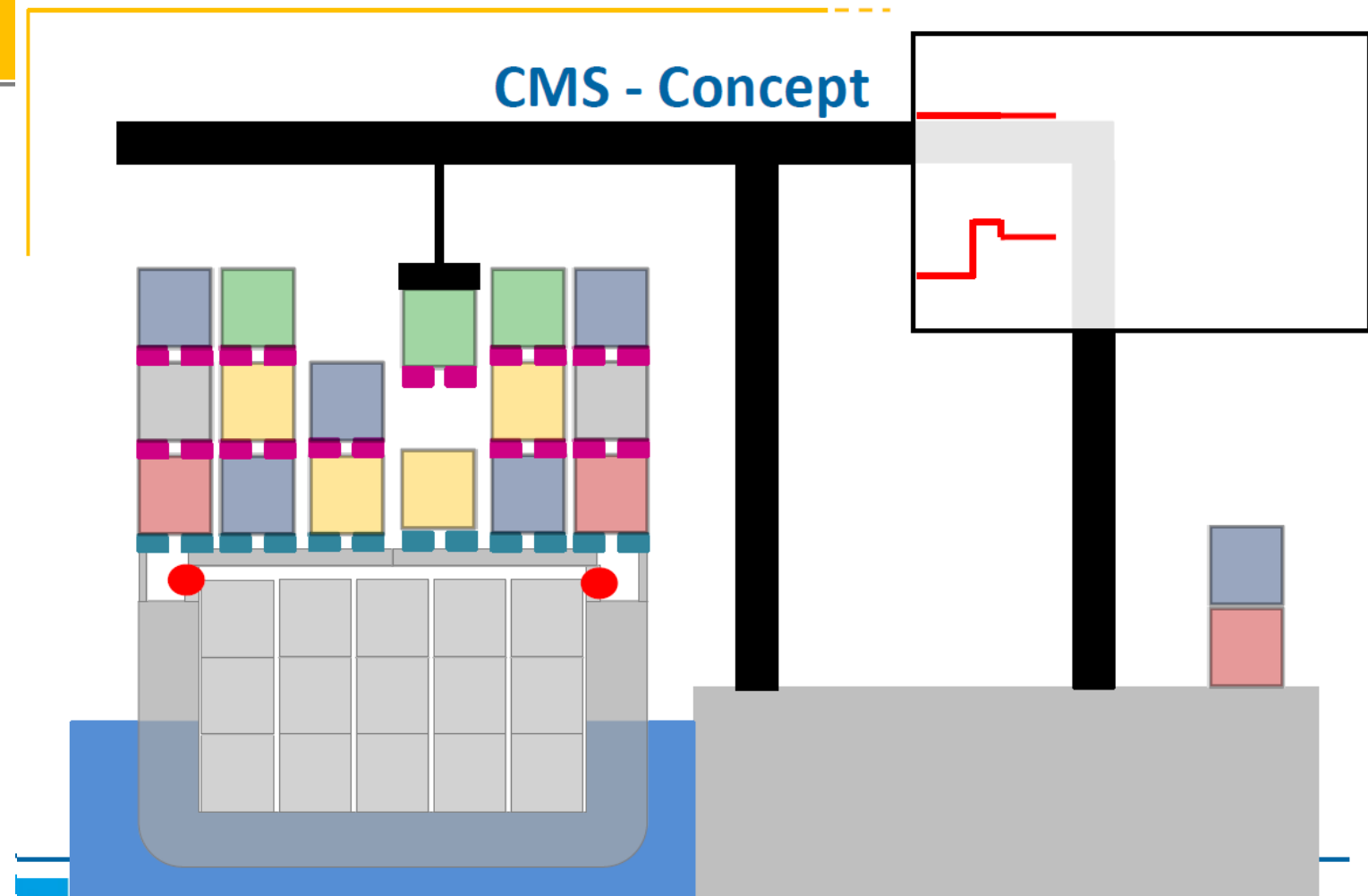


SEC Container Monitoring System (CMS) - Weight Verification

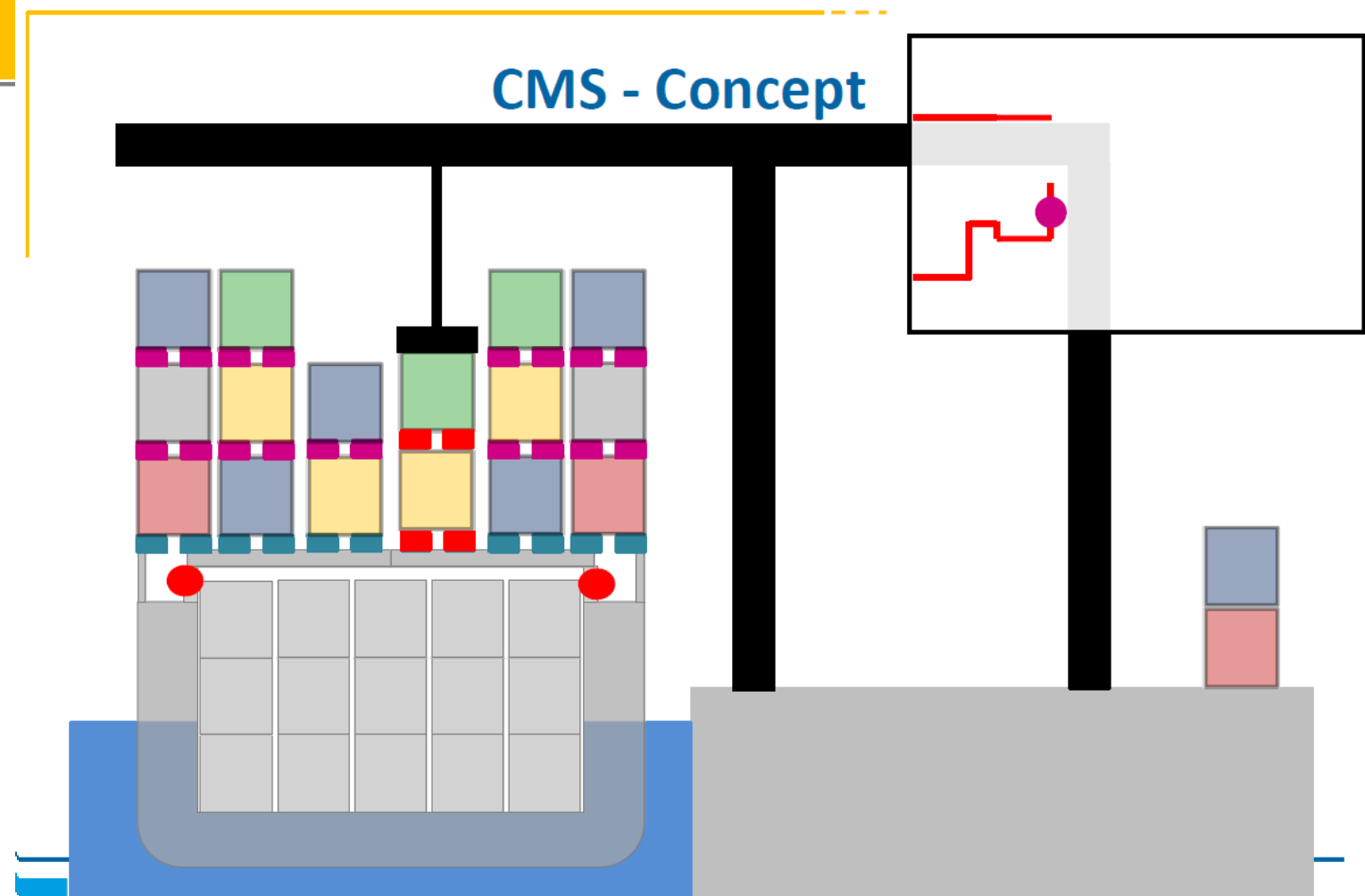
CMS - Concept



SEC Container Monitoring System (CMS) - Weight Verification

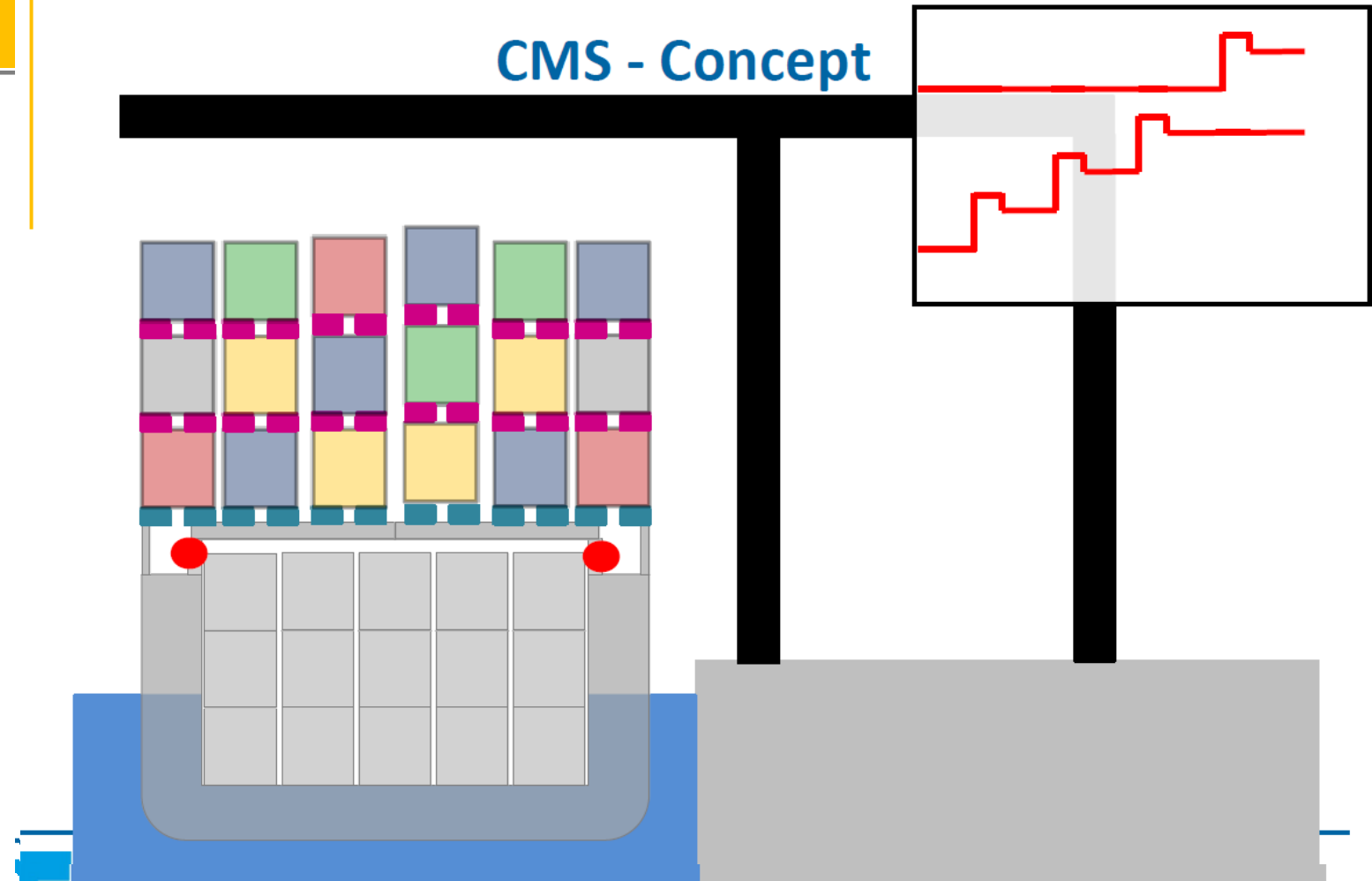


SEC Container Monitoring System (CMS) - Weight Verification



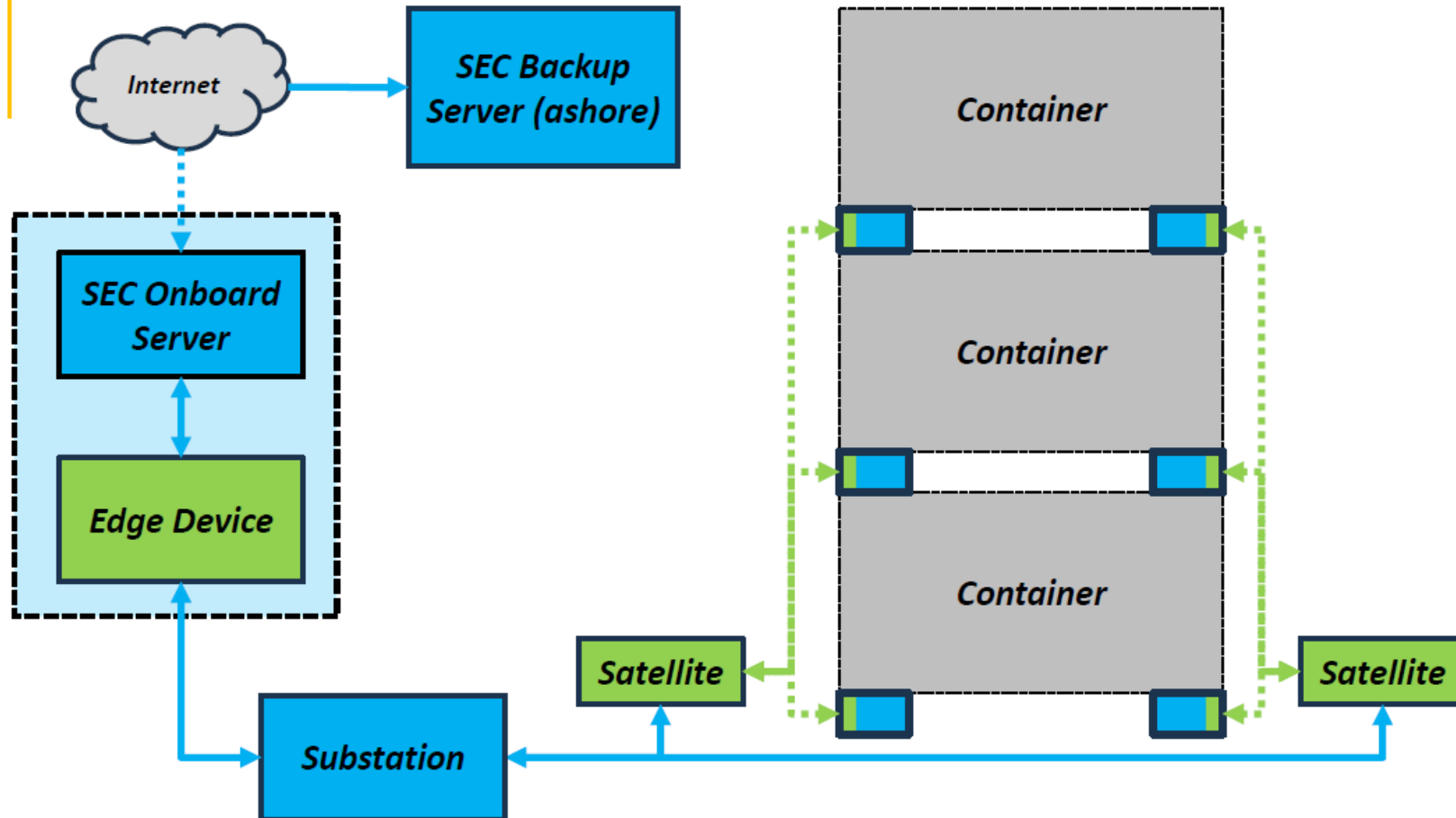
SEC Container Monitoring System (CMS) - Weight Verification

CMS - Concept

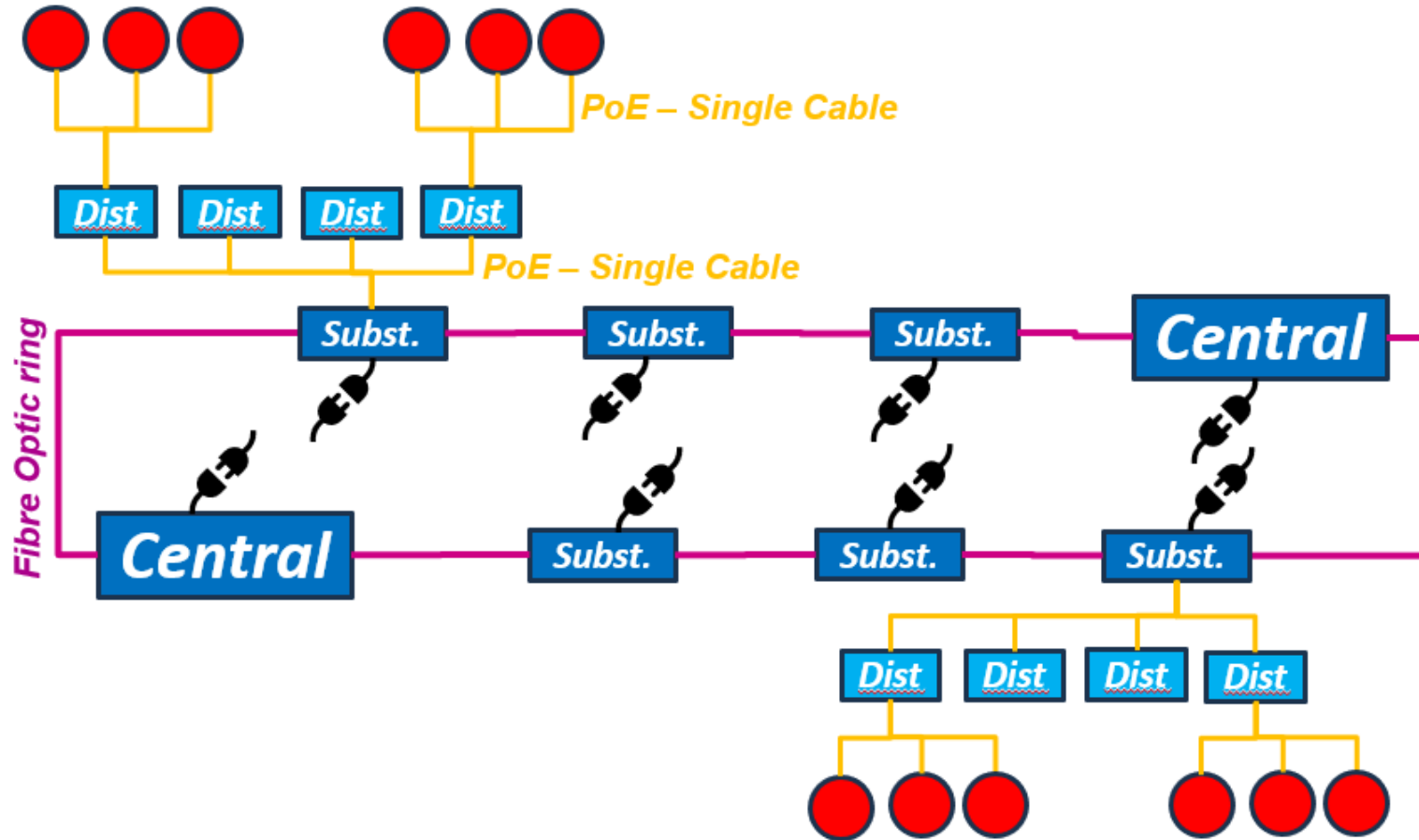


SEC Container Monitoring System (CMS)

CMS – System Overview



SEC Container Monitoring System (CMS) - Installation Design



SEC Container Monitoring System (CMS)

CMS – Fixed Components

Satellites

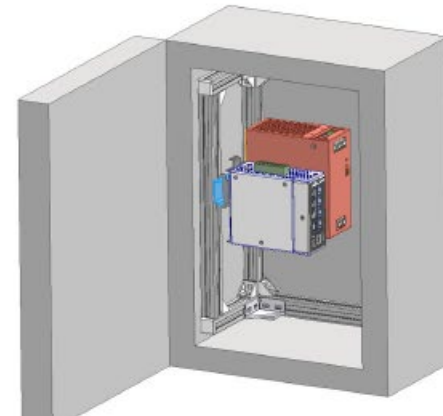
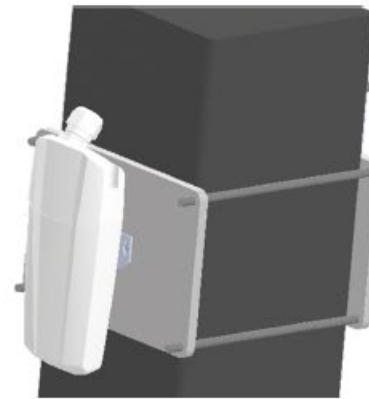
- IMU Sensor (ship movements)
- Antennae
- Power Over Ethernet supply

Central

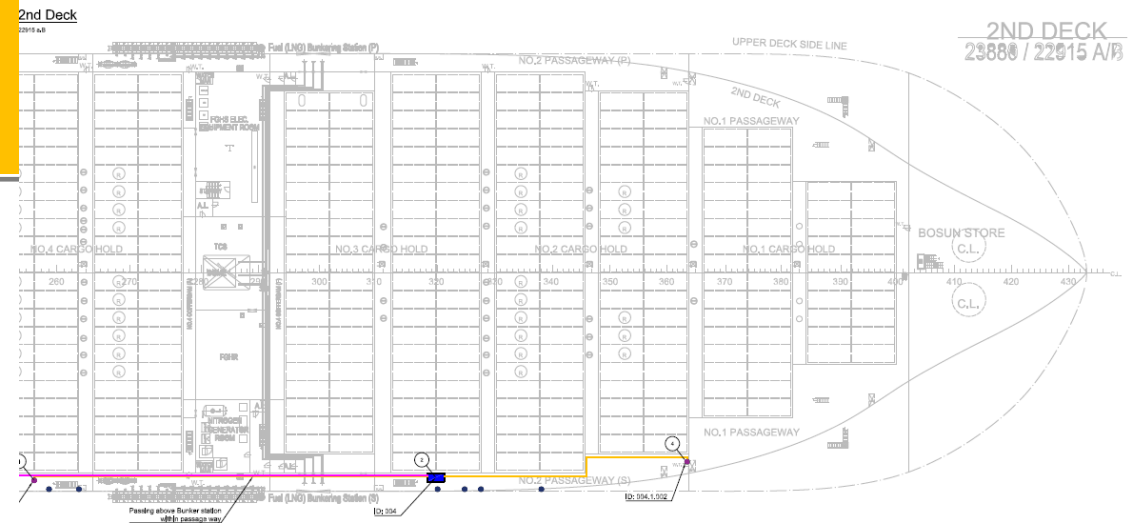
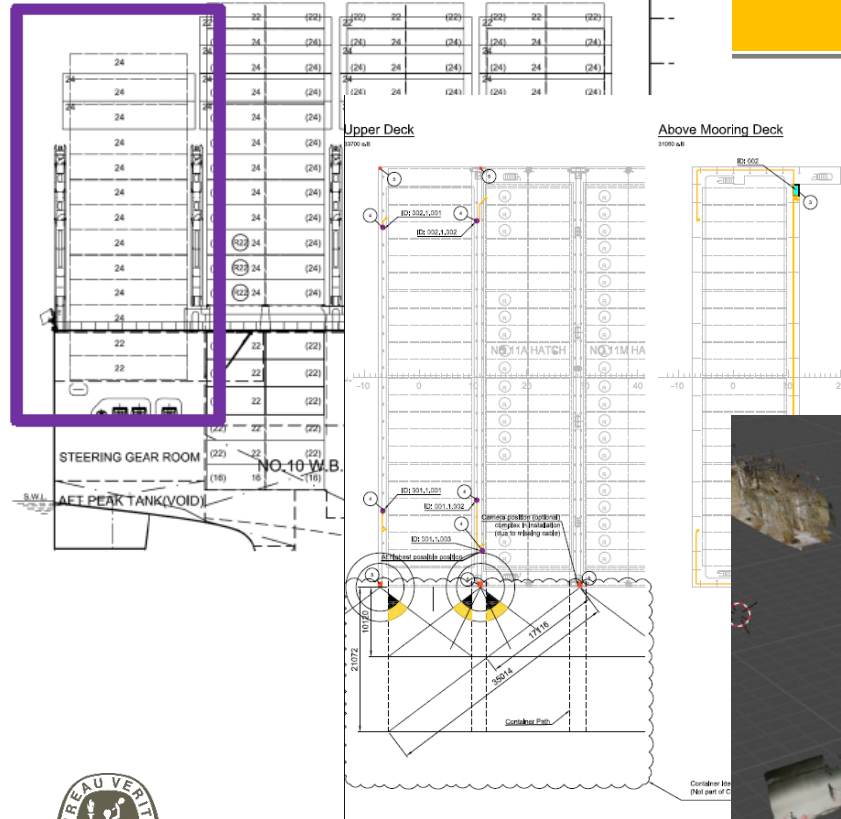
- Data Collection & Backup
- UPS, Heating, Cooling
- Internet Connection
- GPS Data

Substation

- Range Extension for PoE



SEC Container Monitoring System (CMS) - Installation Design



SEC BREMEN		Scale: 1:800		Tot. Weight: -	
A/CIG COMPANY		Item Code:			
Date drawn/proved	Name	Arrangement Scheme Fore			
27.11.2023	HSB	CMS Arrangement			
CMS Agmt.		Drawing Number			3/5
Name	Type	Sheet			



**BUREAU
VERITAS**

SEC Container Monitoring System (CMS)

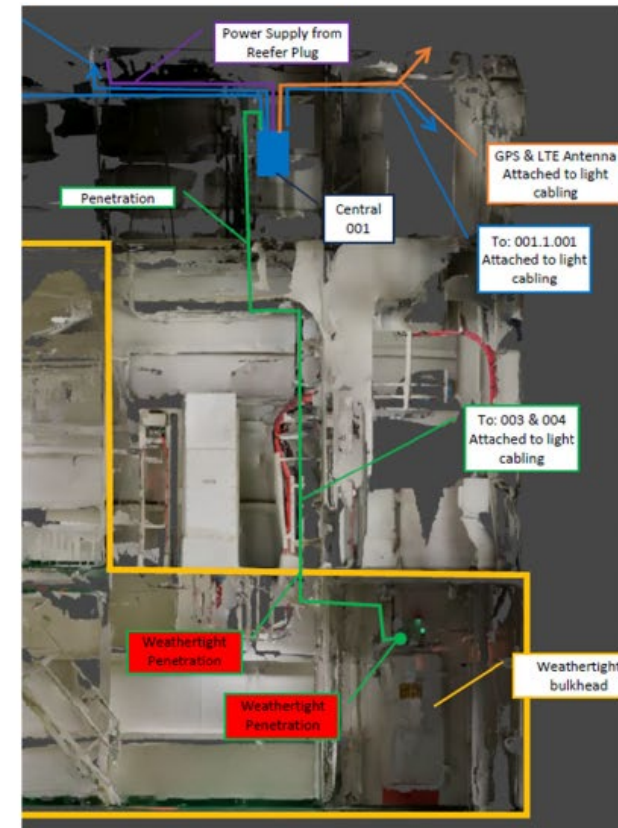
CMS - Installation

Radio Frequency

- 2.4 GHz ISM Band (ZigBee Standard)
- Communication 128AES Encrypted
- IT System completely independent

Installation

- Mooring Deck to Passageway Penetrations
- Power Supply via Reefer or other plugs (to be installed?)
- Removable clamps for fixation of components



SEC Container Monitoring System (CMS)

CMS – Development



Hardware

- Weight Measuring Bottom Lock
- Fire Detection Intermediate Lock

Software

- System Control
- Data Collection
- Weight Determination
- Fire Detection & Evaluation

Installation

- All installation by SEC



- Wireless Data Logistics
- Network Anchors with Accelerometer (satellites)
- Time Synchronized Network
- Bi-directional Communication
- Highly Energy Efficient
- System capable of operating in highly reflective environment (steel)

SEC Container Monitoring System (CMS)

CMS – Specific Goals



- Real Time evaluation of incurring loads
- Reinforced AI Model to improve FEM model based on Load Measurements
- Short Prediction of expected loads based on FDS/TUHH accelerations



- Evaluation of Cargo Vessel movement interaction
- Reinforced AI Model connecting weather, course, speed to accelerations
- Short term prediction of loads
- Warning in case of expected excessive rolling
- Towing tank trials

SEC Container Monitoring System (CMS)

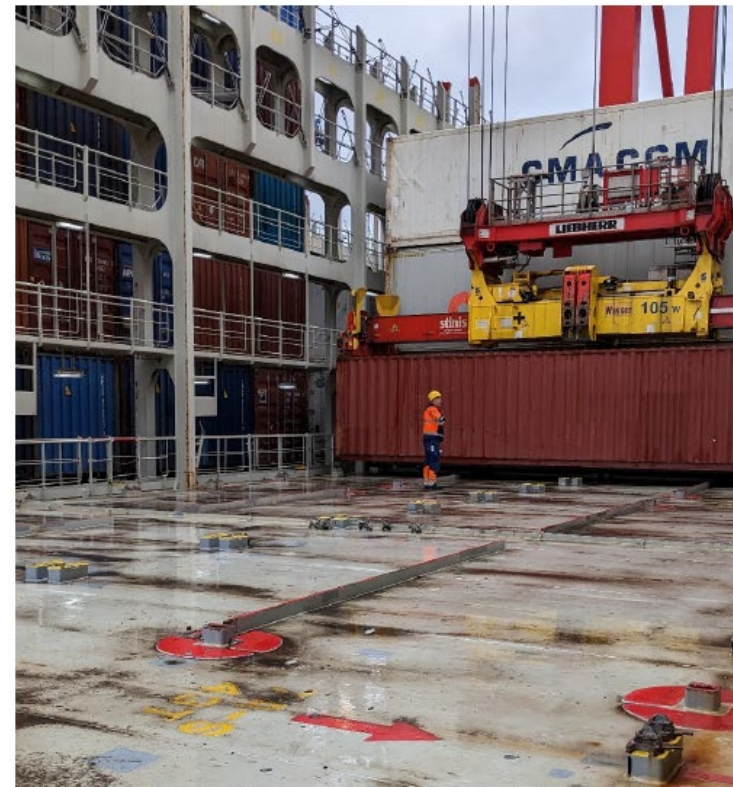
CMS - Operation

Operation

- Twistlocks are operational without any digital enhancement
- Twistlocks certified by BV
- Typical Twistlocks & operation
- System operates autonomously
- Twistlocks & Bins for Bay 94 operation in distinct colour
- Regular inspections/replacements in Europe (if required China) by SEC

Data Obtained During Operation

- Final Container Loading & Weights
- Loading condition(s) during voyage (min start/end)



Application & Timeline



- **Newbuildings & Existing Vessels**
- **Return on Investment**

Thank you very much for your attention!

SEC Ship's Equipment Centre
Bremen GmbH & Co.KG
Speicherhof 5
28217 Bremen



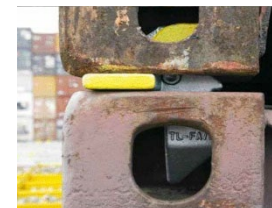
H.I.M.T.
HELLENIC INSTITUTE
OF MARINE TECHNOLOGY



Exclusive Agents

85, Posidonos ave
16674 Glyfada, Athens

Tel. +30-210-8985999
Fax. +30-210-8945215
Email: sec-sales@seamark.gr
Web: www.seamark.gr



**Innovation
made in Bremen
Cargo-Securing
Systems**



**Worldwide
service**

